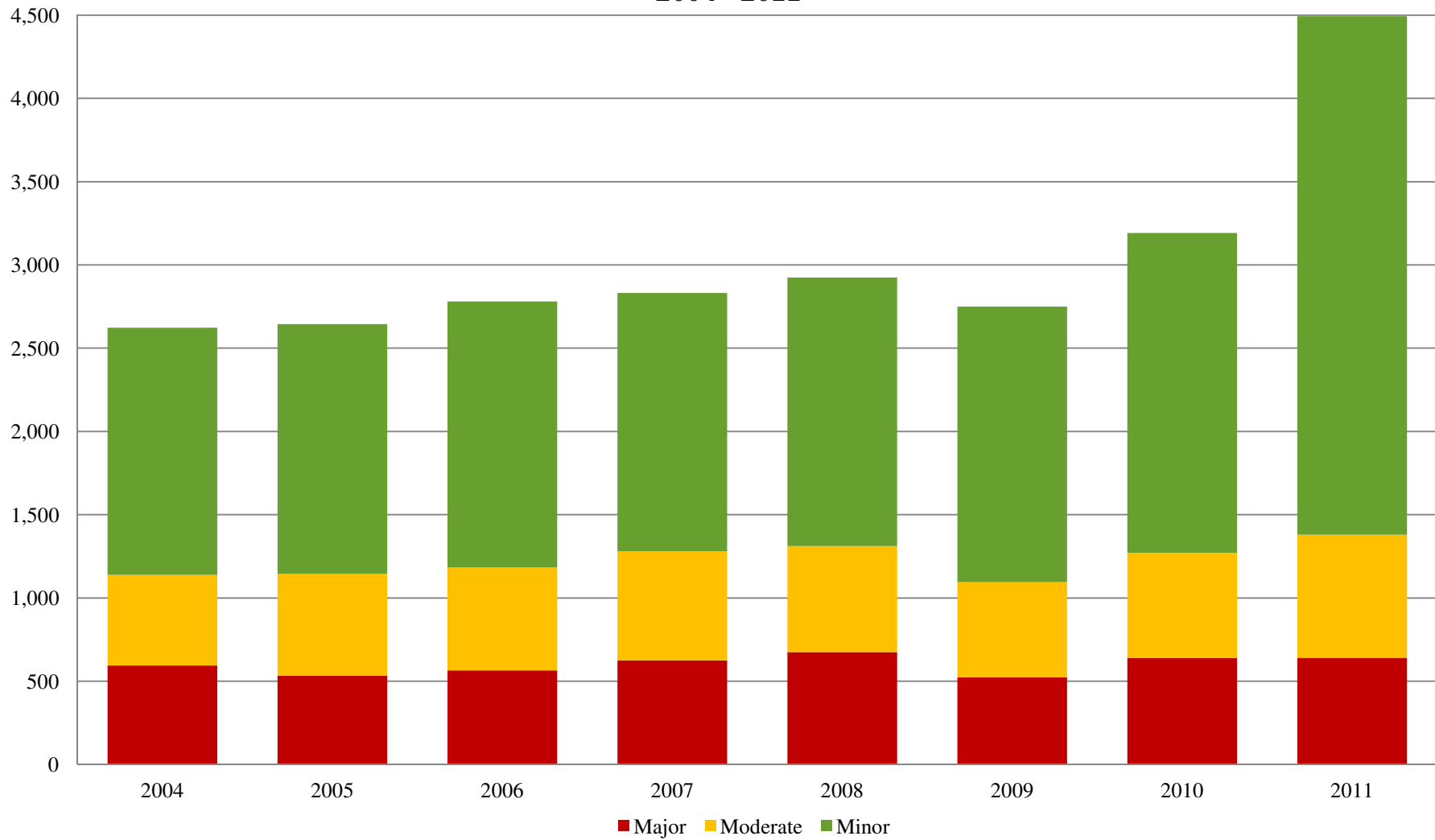


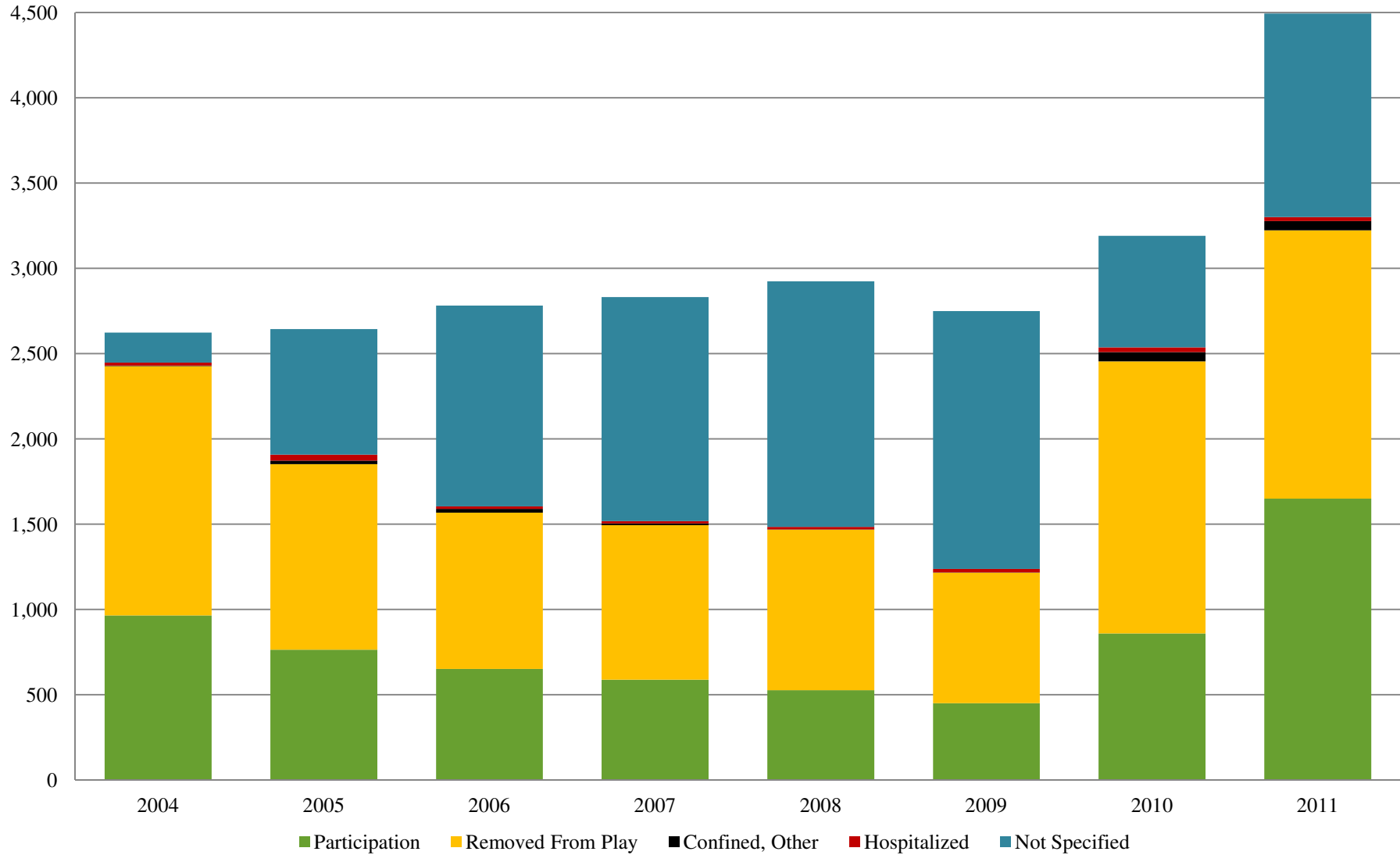
**TOTAL INJURIES  
BY SEASON AND SEVERITY  
2004 - 2011**



Notes: Severity is defined by the number of days a player missed:  
Minor: less than 8 days; Moderate: from 8 to 21 days; Major: more than 21 days.

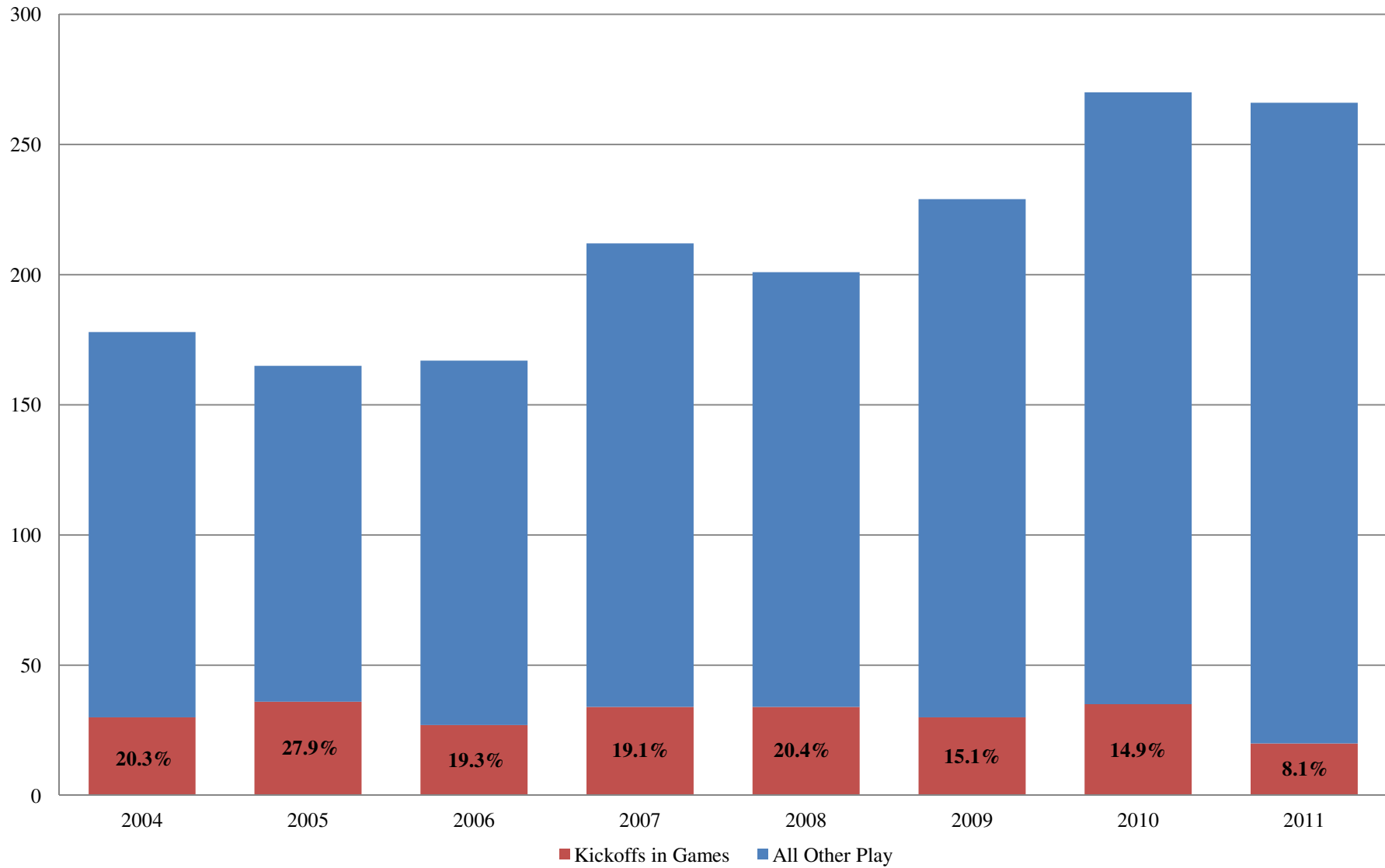
Source: NFLISS.

**TOTAL INJURIES  
BY SEASON AND ACTION TAKEN  
2004 - 2011**



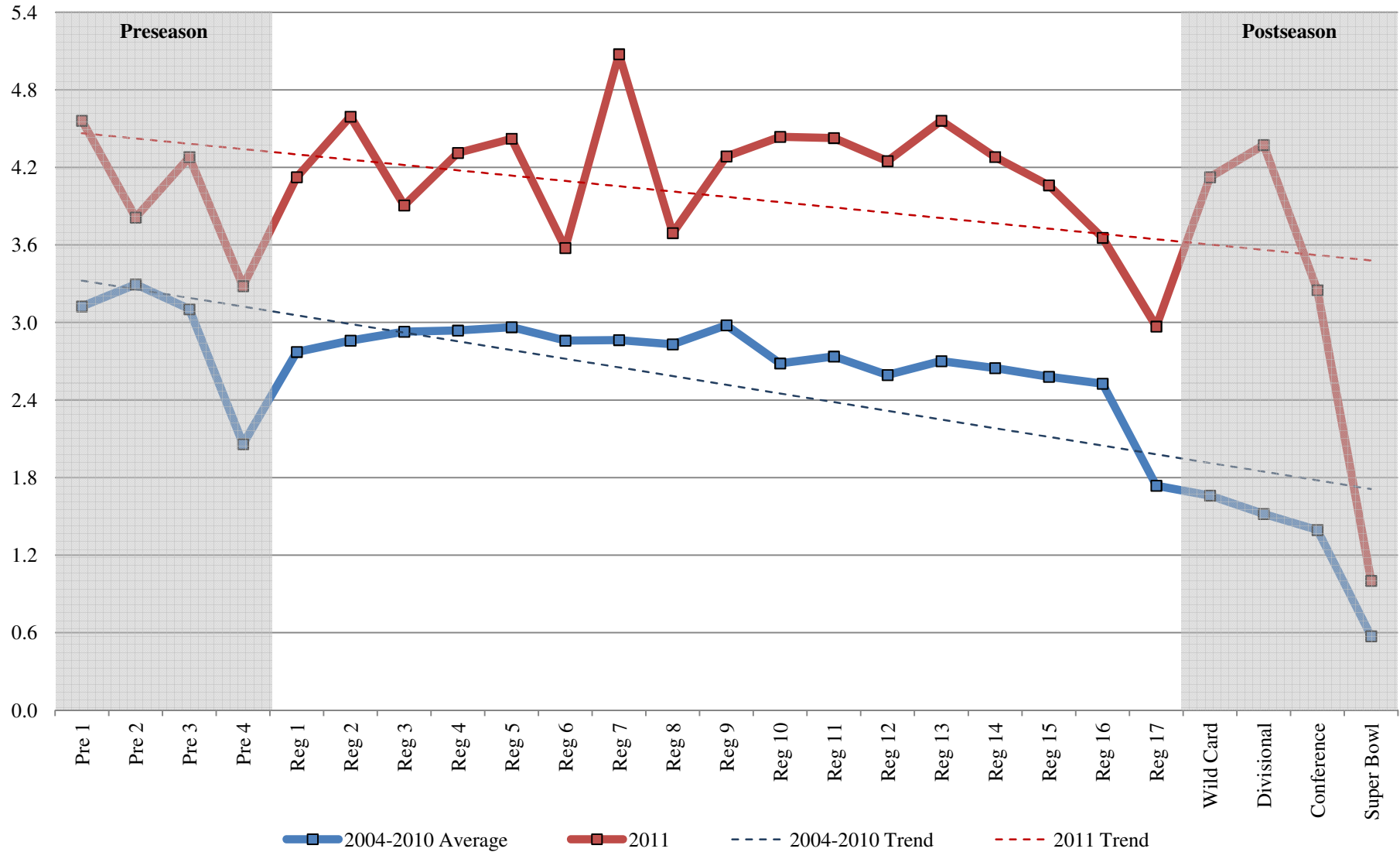
Source: NFLISS.

**MILD TRAUMATIC BRAIN INJURIES  
BY SEASON AND TYPE OF PLAY  
2004 - 2011**



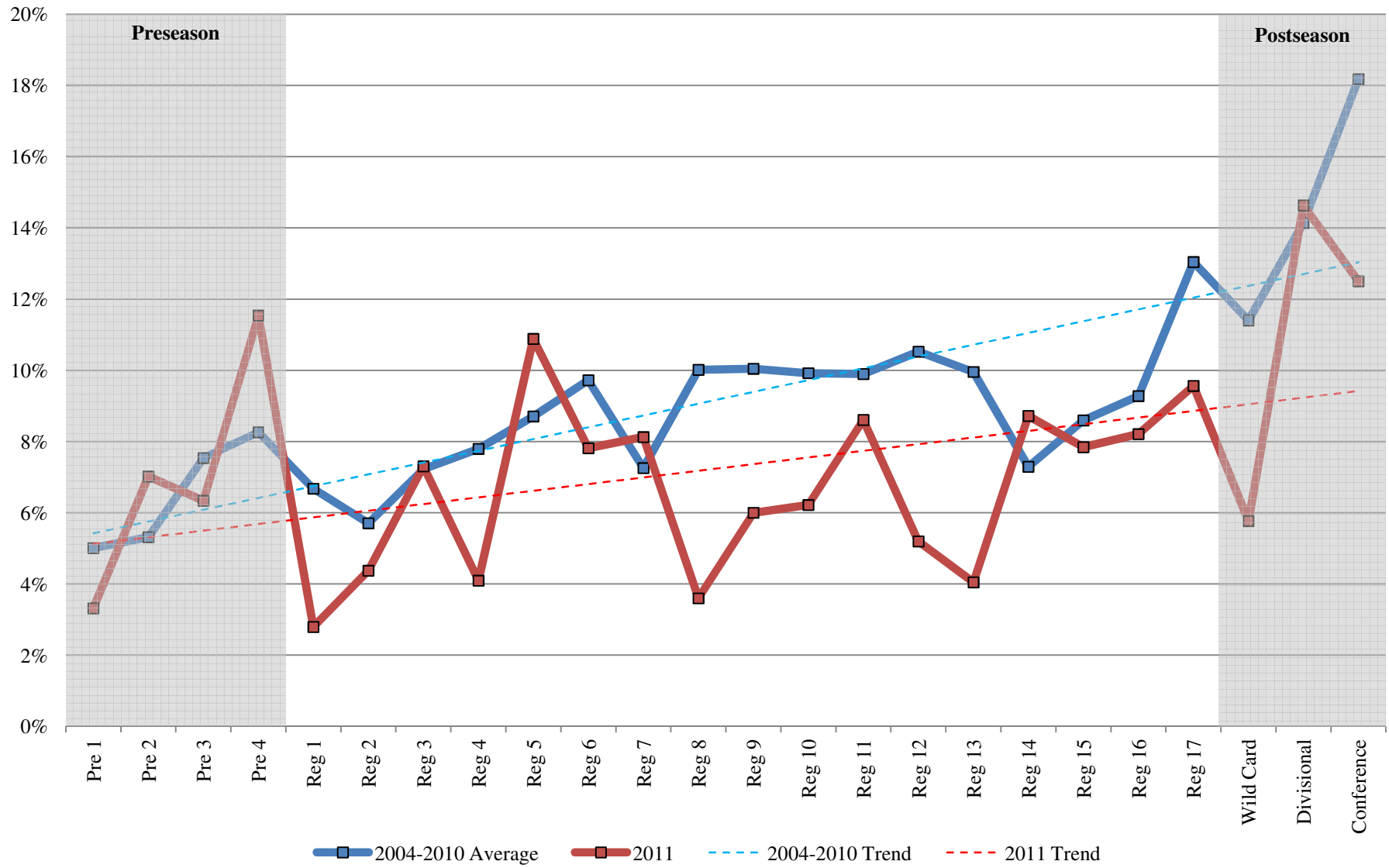
Source: NFLISS.

## AVERAGE INJURIES PER TEAM PER GAME BY WEEK 2004 - 2010 VS. 2011



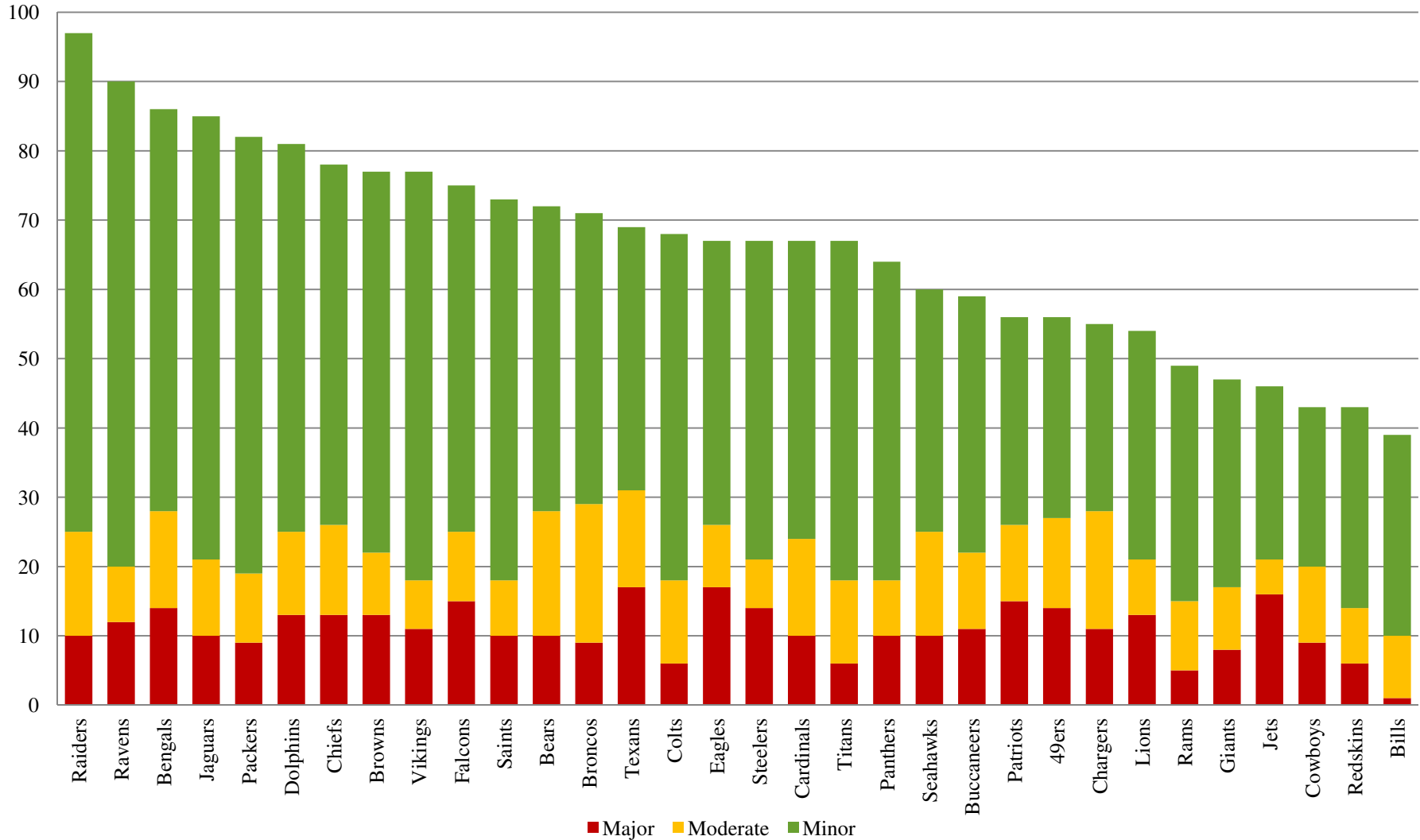
Source: NFLISS.

## MTBI AS SHARE OF TOTAL INJURIES BY WEEK 2004 - 2010 VS. 2011



Source: NFLISS.

## TOTAL INJURIES BY OPPONENT BY TEAM AND SEVERITY 2011



Notes: Severity is defined by the number of days a player missed:  
 Minor: less than 8 days; Moderate: from 8 to 21 days; Major: more than 21 days.

Source: NFLISS.